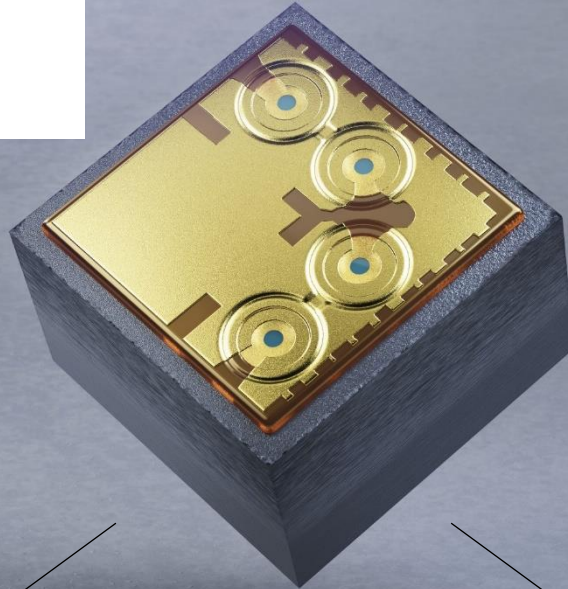


VCSEL

Multi-Mode
10 mW
940 nm



> Parallel Infrared
Light Source

> Time of Flight
Proximity Sensing

> 4 Multi-Mode
Emitters

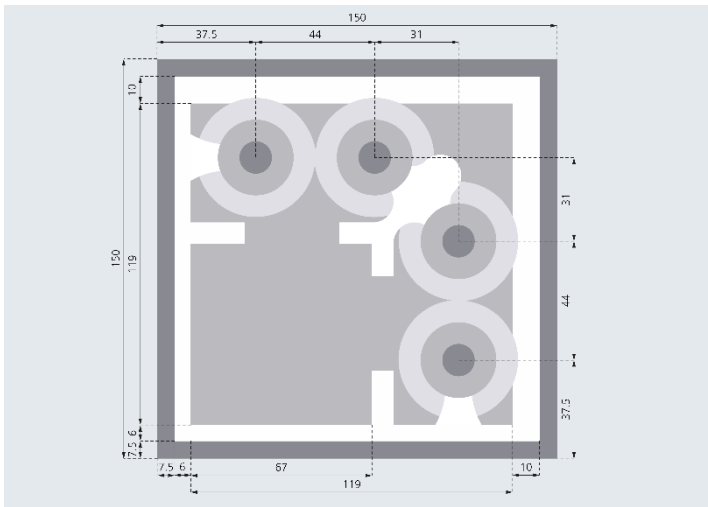
> Camera
Auto-Focus

Datasheet: 10 mW 940 nm Multi-Mode VCSEL Array

Electro-Optical Characteristics (T = 45°C, 3 ns pulse width, 30% duty cycle, I = 25 mA unless otherwise stated)

Parameter	Units	Min.	Typ.	Max.	Notes
Operating current	mA		25		
Threshold current	mA	1.45	3.5	8	T = 10...80°C
Forward voltage	V	1.5		2.3	T = 10...80°C
Optical output power	mW	8		17	T = 10...80°C
Beam divergence (full width, 1/e ²)	°	22	27	32	T = 10...80°C
Rise time (10% to 90%)	ps		100	500	
Fall time (90% to 10%)	ps		100	500	

Dimensions





Units: μm

Type	Single chip
Part number	TVT-011-940-A
Ordering number	ULM940-01-TN-H0101L_S
Dimensions	150 x 150 x 150 μm

For more information visit
www.trumpf.com/s/VCSEL-solutions

Safety information:

-  Invisible laser radiation / avoid beam exposure / class 3B laser product
-  Electrostatic sensitive devices / observe precautions for handling

TRUMPF Photonic Components GmbH

Lise-Meitner-Straße 13 · 89081 Ulm · Germany

E-mail: photonic.components@trumpf.com · Homepage: www.trumpf.com/s/VCSEL-solutions

June 2022

